



Achieving ppt Levels of Environmental Volatiles with a New Headspace Sampler.

KEY WORDS: Volatiles, ppt, VOC, Headspace

INTRODUCTION

This study focuses on the SCION Instruments Versa Automated Headspace Analyzer and its ability to analyze Volatile Organic Compounds (VOCs) in water at the part per trillion (ppt) level.

The European Union defines a VOC component as "any organic compound having an initial boiling point less than or equal to 250°C, measured at a standard atmospheric pressure of 101.3 kPa". Many VOCs are man-made chemicals that are used and produced in different industries.

VOCs can be harmful to the human health, the effects can be direct or can be build up in the body to cause long-term health problems. Because of these health effects it is important to monitor the VOCs. SCION Instruments offers a perfect solution to measure these components even on ppt levels.



Figure 1. SCION VERSA Headspace Sampler together with the SCION Instruments 8300 GC platform in combination with to 8700 SQ-MS.

Achieving ppt Levels of Environmental Volatiles with a New Headspace Sampler.

EXPERIMENTAL CONDITIONS

The Versa Automated Headspace Analyzer in conjunction with a GC/MS system was used for this analysis. The parameters for these systems are displayed in table 1.

STANDARD AND SAMPLE PREPARATION

Stock standards from a 524.3 and a 502.2 commercially available mix were prepared in methanol at 5 and 50 parts per million (ppm). These stock standards were used to prepare working standards in distilled water for the calibration curve and MDL study. The compound list is presented in Table 3.

An internal standard solution containing 4 ppm of fluorobenzene, 4-bromofluorobenzene and 1,2-dichlorobenzene-d4 were prepared in methanol. 5 µL of this standard was added to all samples and blanks for a final concentration of 2.0 ppb.

The headspace samples consisted of 10 mL of distilled water or the appropriate working standard.

CALIBRATION CURVES AND MDL

The stock standard above was used to make a calibration curve from 0.020 to 20 ppb. MDL samples were prepared at .050 and 0.100 ppb. Figure 2 is the total SIM chromatogram of a 0.5 ppb standard which is typically the lower detection limit standard used in scanning GC/MS. Figure 3 is a SIM chromatogram of the 0.020 ppb standard.

The data passed the current requirements of both methods with the majority detectable below the 0.020 ppb standard. The calibration curve from 0.020 ppb to 20 ppb for most of the compounds was <10% RSD, and the correlation coefficient was >0.995 for all compounds except 1,1,2,2-tetrachloroethane. 1,2-Dibromo-3-chloropropane and 1,1,2,2-tetrachloroethane were not detectable below 0.100 ppb with this method making their calibration range from 0.100 ppb to 20 ppb.

Table 2 presents the calibration data including %RSD for both the response factors Rf and using n=7 replicate samples for MDLs, correlation coefficients, and calculated MDLs. Styrene, toluene and methylene chloride are laboratory background contaminants.

1,1,2,2-tetrachloroethane did not pass the %RSD or correlation coefficient requirements when tested as an unmodified water sample. The newly released EPA Method 524.3 uses maleic acid as a dechlorinating agent and ascorbic acid as a preservative. 1,1,2,2-tetrachloroethane did pass these requirements when tested with the addition of these acids as a matrix modifying solution.

Minimum detection limits calculated from 0.050 ppb standards were below 0.020 ppb for all of the compounds except 1,2-dibromo-3-chloropropane and 1,1,2,2-tetrachloroethane. The MDL values for these two compounds were calculated from the 0.100 ppb level standards.

Table 1. Instrumentation operating conditions.

Injector	Split 30:1, 200 °C
Column	Rtx-502.2
Oven Program	35°C (1 min), 8°C/min to 160°C, 20°C/min to 200°C (3 min)
Carrier	Helium
Flow	1.0 ml/min
Software	Compass CDS/ MSWS/ HT3 Teklink
MS transfer line temperature	220°C
Ion source temperature	230°C
Ionization mode	EI
Scan start	1.65
Scan mode	SIM
Oven temperature	VERSA
Transfer line temperature	120°C
Sample temperature	120°C
Sample equilibrium	70°C
	10 min

Achieving ppt Levels of Environmental Volatiles with a New Headspace Sampler.

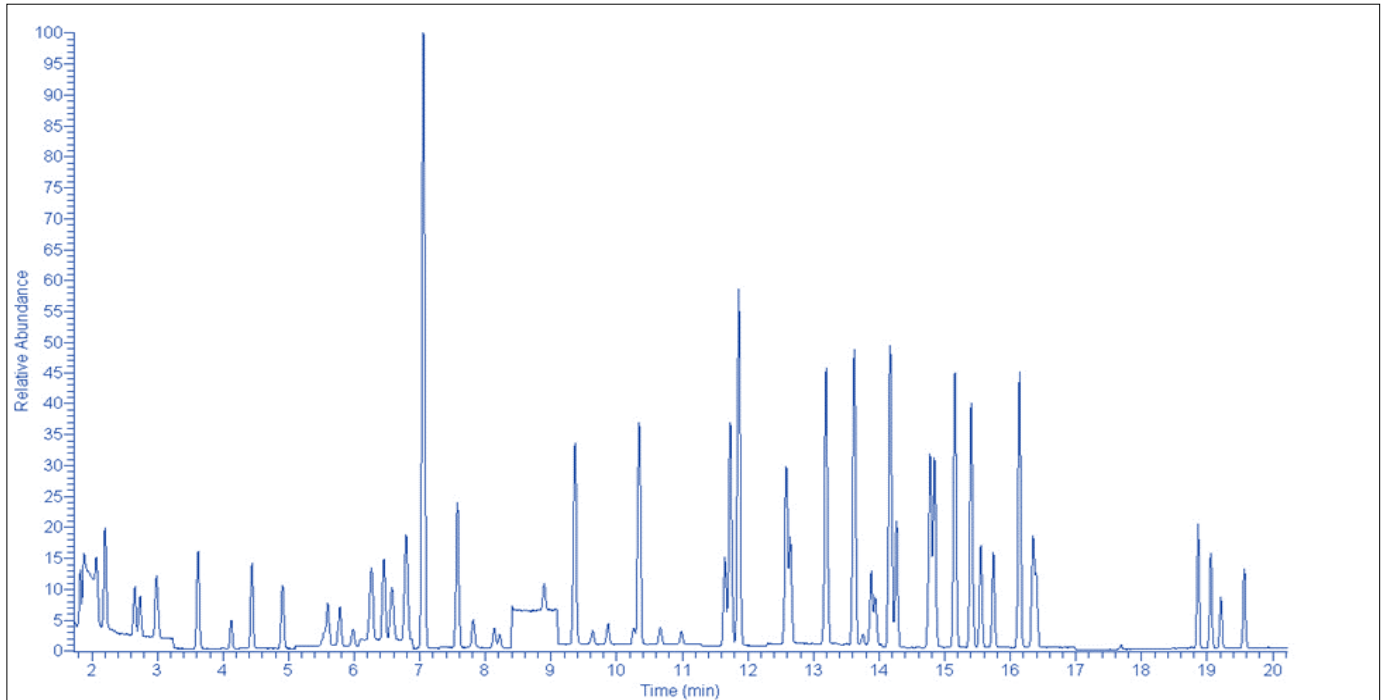


Figure 2: Chromatogram of the Summed Specific Ions of the 0.5 ppb Standard

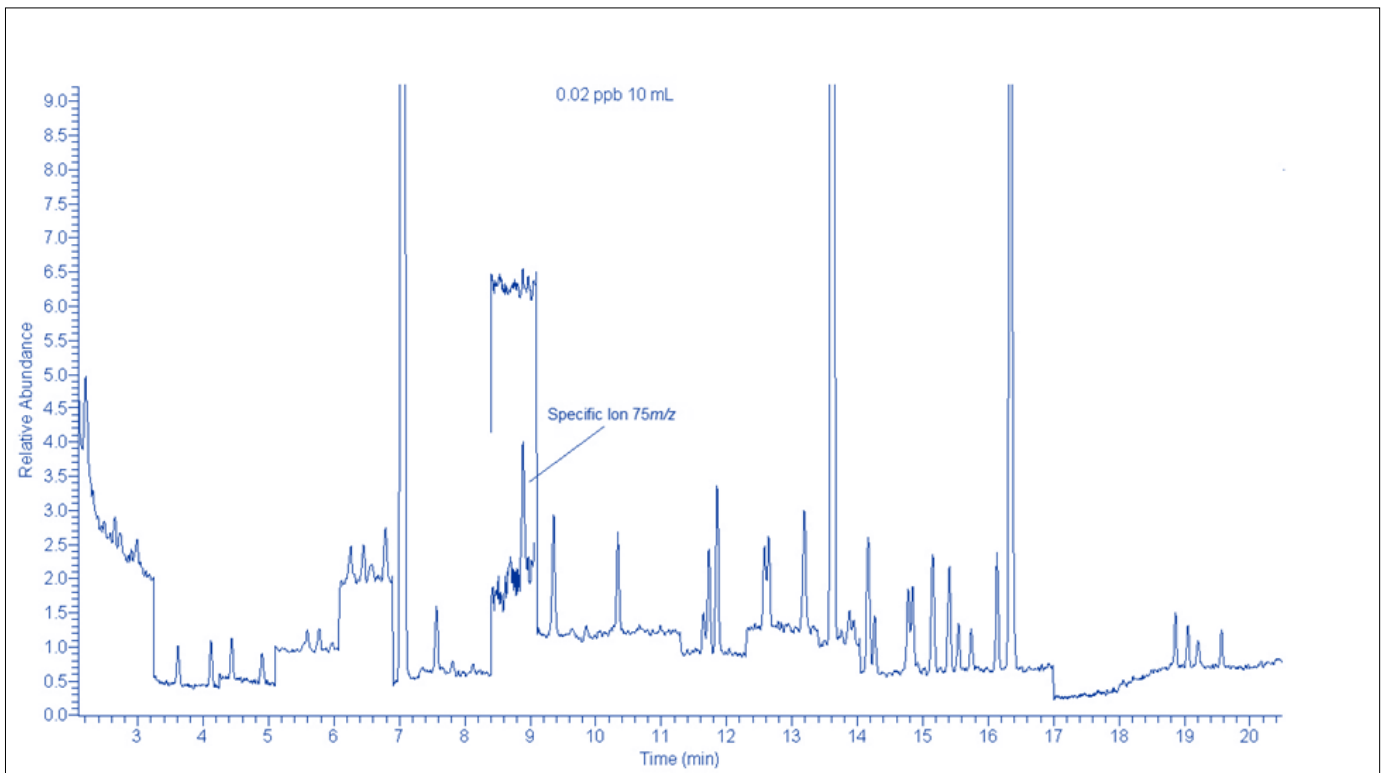


Figure 3: Chromatogram of the Summed Specific Ions of the 0.020 ppb Standard. The specific ion mass 75 m/z of *cis*-1,3-dichloropropene is inserted to display its peak area.

Achieving ppt Levels of Environmental Volatiles with a New Headspace Sampler.

Table 2. Mass Ion, Scan Rate, and Calculated Data for the VOCs Evaluated

Compound	Quant Mass	Dwell Time	Confirm	Rf %RSD 0.02 -20	Linearity r^2	%RSD n=7 0.050 ppb	MDL 0.050 ppb
Dichlorodifluoromethane	85	30	101	8.1	0.9956	7.2	0.014
Chloromethane	50	30	52	6.8	0.9995	2.7	0.004
Vinyl Chloride	62	30	64	4.2	0.9990	4.5	0.008
Bromomethane	94	30	96	3.2	0.9999	8.2	0.013
Chloroethane	64	30	66	8.0	0.9998	7.3	0.012
Trichlorofluoromethane	101	30	66	9.3	0.9972	8.3	0.015
1,1-Dichloroethene	96	50	61	6.3	0.9989	6.1	0.010
Methylene Chloride	84	50	49	45.0	0.9999	5.1	0.009
trans-1,2-Dichloroethene	96	50	98	3.3	0.9998	7.2	0.011
1,1-Dichloroethane	63	50	65	3.3	0.9999	8.1	0.013
2,2-Dichloropropane (¹)	77	50	79	9.8	0.9999	9.1	0.014
cis-1,2-Dichloroethene	61	50	98	5.0	0.9999	7.9	0.012
Chloroform	83	50	85	4.8	0.9999	7.0	0.011
Bromochloromethane	128	50	130	4.3	0.9999	4.4	0.006
1,1,1-Trichloroethane	97	30	99	4.8	0.9996	9.1	0.015
1,1-Dichloropropene	75	30	110	5.7	0.9995	5.0	0.008
Carbon Tetrachloride	117	30	119	9.8	0.9992	6.8	0.012
1,2-Dichloroethane	62	30	64	5.2	0.9999	3.0	0.005
Benzene	78	30	77	4.9	0.9999	5.9	0.010
<i>Fluorobenzene (IS)</i>	96	50	70	3.7			
Trichloroethene	95	50	130	7.1	0.9985	8.7	0.015
1,2-Dichloropropane	63	50	62	1.7	1.0000	6.1	0.010
Bromodichloromethane	83	50	85	6.3	0.9999	8.4	0.014
Dibromomethane	174	50	95	3.7	1.0000	4.8	0.009
cis-1,3-Dichloropropene	75	50	39	3.9	0.9998	8.9	0.012
Toluene	92	40	91	10.7	0.9998	6.0	0.010
trans-1,3-Dichloropropene	75	40	77	2.9	0.9999	8.5	0.012
1,1,2-Trichloroethane	97	40	99	5.8	0.9999	10.4	0.017
1,3-Dichloropropane	76	40	78	3.3	0.9997	6.7	0.010

Achieving ppt Levels of Environmental Volatiles with a New Headspace Sampler.

Table 2 Continue. Mass Ion, Scan Rate, and Calculated Data for the VOCs Evaluated

Compound	Quant Mass	Dwell Time	Confirm	Rf %RSD 0.02 -20	Linearity r^2	%RSD n=7 0.050 ppb	MDL 0.050 ppb
Tetrachloroethene	166	40	164	2.9	0.9990	6.7	0.011
Dibromochloromethane	127	40	129	5.0	0.9999	6.5	0.010
1,2-Dibromoethane (EDB)	107	40	109	4.0	0.9999	8.8	0.014
Chlorobenzene	112	50	77	3.1	0.9998	5.2	0.008
1,1,1,2-Tetrachloroethane	131	50	133	2.8	0.9999	7.6	0.012
Ethylbenzene	91	50	106	3.0	0.9999	5.1	0.008
m-, p-Xylene	91	50	106	5.4	0.9999	5.7	0.017
o-Xylene	91	30	106	3.9	0.9999	6.2	0.010
Styrene	104	30	103	18.9	0.9998	6.8	0.010
Isopropylbenzene	105	30	120	5.4	0.9998	6.8	0.010
Bromoform	173	30	171	6.5	0.9999	4.6	0.008
1,1,1,2-Tetrachloroethane ⁽²⁾	83	35	95	38.2 ⁽³⁾ 4.3 ⁽³⁾	0.9880 0.9994	8.7 ⁽⁴⁾	0.061 ⁽⁴⁾
4-Bromofluorobenzene (IS)	95	35	174	4.6			
1,2,3-Trichloropropane	75	35	110	4.6	0.9999	6.9	0.011
n-Propylbenzene	120	35	92	6.6	0.9999	5.3	0.008
Bromobenzene	77	35	156	7.4	0.9999	8.8	0.011
1,3,5-Trimethylbenzene	105	50	120	6.8	0.9998	6.8	0.009
2-Chlorotoluene	126	50	128	7.4	0.9999	7.4	0.011
4-Chlorotoluene	91	50	126	6.8	0.9998	4.8	0.007
t-Butylbenzene	119	50	91	6.2	0.9998	7.9	0.012
1,2,4-Trimethylbenzene	105	50	120	5.8	0.9998	6.8	0.010
sec-Butylbenzene	105	40	134	8.0	0.9993	6.4	0.009
4-Isopropyltoluene	119	40	134	8.4	0.9995	5.9	0.009
1,3-Dichlorobenzene	146	40	148	3.4	0.9997	7.6	0.011
1,4-Dichlorobenzene	146	40	148	3.0	0.9998	4.6	0.007
n-Butylbenzene	91	40	134	9.7	0.9995	5.5	0.008
1,2-Dichlorobenzene-d4 (IS)	152	40	154	6.5			
1,2-Dichlorobenzene	146	40	148	2.6	0.9998	6.3	0.009
1,2-Dibromo-3-chloropropane ⁽²⁾	157	70	75	5.9	1.0000	9.9 ⁽⁴⁾	0.032 ⁽⁴⁾

Achieving ppt Levels of Environmental Volatiles with a New Headspace Sampler.

Table 2 Continue. Mass Ion, Scan Rate, and Calculated Data for the VOCs Evaluated

Compound	Quant Mass	Dwell Time	Confirm	Rf %RSD 0.02 -20	Linearity r^2	%RSD n=7 0.050 ppb	MDL 0.050 ppb
1,2,4-Trichlorobenzene	180	50	182	4.7	0.9996	3.7	0.006
Hexachlorobutadiene	225	50	227	4.8	0.9970	6.6	0.011
Naphthalene	128	50	127	4.8	1.0000	4.9	0.009
1,2,3-Trichlorobenzene	180	50	182	5.1	0.9997	7.1	0.012

1 – No peak detected at the 0.020 ppb levels.

2 – No peak detected at the 0.020 ppb or the 0.050 ppb levels.

3 – Upper data from the unmodified water standards. Bottom data from the ascorbic and maleic acid modified solution.

4 – MDL data calculated from the 0.100 ppb standards.

CONCLUSION

Versa, a static only headspace instrument, was evaluated to determine its capability of producing quantitative data for VOCs using SIM GC/MS at or below current water methods. These water methods include US EPA Method 524 and the 98/83/EC Directive. The data passed the current requirements for both methods with most of the compounds detectable below the 0.020 ppb standard. These detection limits are well below the current levels required by these methods.

ORDER INFORMATION

Part number	SCION VERSA Headspace
SC150800100	Versa Static Headspace Vial Sampler 110V. This analyzer comes with a 20 position autosampler, single-position platen heater, integrated mixing system, and completely heated inert sample pathway. Entire system can be heated from ambient up to 200 degrees C in increments of 1 degree C. Valve and loop configuration includes 1mL standard loop. Built-in pressure control assures consistent volume regardless of external conditions. Windows XP or higher is required to operate and includes the Versa TekLink 2G software. Power requirements are 115V, 50/60 Hz, 5A. Make sure to order the appropriate GC interface cable to ensure proper installation.
SC150800200	Versa Static Headspace Vial Sampler 230V. This analyzer comes with a 20 position autosampler, single-position platen heater, integrated mixing system, and completely heated inert sample pathway. Entire system can be heated from ambient up to 200 degrees C in increments of 1 degree C. Valve and loop configuration includes 1mL standard loop. Built-in pressure control assures consistent volume regardless of external conditions. Windows XP or higher is required to operate and includes the Versa TekLink 2G software. Power requirements are 230V, 50/60 Hz, 5A. Make sure to order the appropriate GC interface cable to ensure proper installation.

SCION Instruments

UK
4 Michaelson Square
Livingston
EH54 7DP, Scotland, UK
Phone +44 1506 300 200
sales-eu@scioninstruments.com

The Netherlands
Amundsenweg 22-24
4462 GP Goes,
The Netherlands
Phone +31 (0) 113 287 600
sales-eu@scioninstruments.com