



# CHROMATOGRAPHY SOLUTIONS

## PRODUCT OVERVIEW

SCION Instruments specialise in premium Gas and Liquid Chromatography solutions for research and industry.

This brochure will help you understand our product range and the benefits our instruments can offer your lab.



## Company Overview

### SCION INSTRUMENTS GAS & LIQUID CHROMATOGRAPHY SOLUTIONS HELP YOU BOOST PRODUCTIVITY AND GENERATE DATA CONFIDENTLY.

Built on the history of Chrompack and Varian in GC and GC-MS, SCION Instruments was acquired by the Techcomp group in 2014.

SCION Instruments designs, develops, supplies and supports GC, GC-MS, LC and Compass CDS (chromatography data system) product lines.

The company prides itself for manufacturing in Europe at facilities in Goes, The Netherlands with its headquarters based in Livingston, Scotland.

SCION Instruments maintains a global infrastructure to support sales around the world. As well as providing support for SCION Instruments customers, there is also service and support available for users of legacy Varian systems.



### A Techcomp Company

Founded in 1988, Techcomp Instruments Ltd is a laboratory instrumentation group headquartered in Hong Kong.

Techcomp engages in Development, Manufacture and Distribution of Scientific Instruments globally.

Our core technologies include Molecular Spectroscopy, Mass Spectroscopy, Chromatography and General Laboratory Instrumentation.

Techcomp Europe Ltd, based in the UK, comprises a group of European companies with operations dating back to 1920.

As well as SCION Instruments, the Group consists of Dynamica, Edinburgh Instruments, Edinburgh Sensors, Froilabo, Isotopx and Precisa.





## Gas Chromatography



### Model GC 8300

- Compact footprint of only 32 cm (12.6") wide
- Fast ramp rate oven (170°C/minute)
- Two channel architecture, with up to 2 injection ports and 2 detectors (including MS)
- 10" High resolution full-colour touchscreen, 16 languages supported
- Electronic flow control (EFC), up to 3 EFC modules 0.001psi resolution
- Flexibility to add samplers, valves, valve oven and backflush capabilities.
- Programmed and controlled through CompassCDS



### Model GC 8500

- Ultimate flexibility/configurability.
- Fast ramp rate oven (150°C/minute)
- Three channel architecture, with up to 3 injection ports and 4 detectors (including MS)
- 10" High resolution full-colour touchscreen, 16 languages supported
- Electronic Flow Control (EFC), up to 9 EFC modules at 0.001psi resolution.
- Flexibility to add samplers, valves, valve oven, backflush and column switching capabilities, etc.
- Programmed and controlled through CompassCDS



## Standard Analyser Solutions



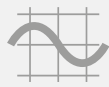
### Solutions

- Simulated Distillation
- Detailed Hydrocarbon Analyser
- Transformer Oil Gas Analyser
- Biodiesel
- Refinery gas & Natural Gas Analysers
- Beer analyser
- Greenhouse Gas Analyser



### Solution Features

- Designed, Tested and Documented
- Method compliance
- Application Guaranteed

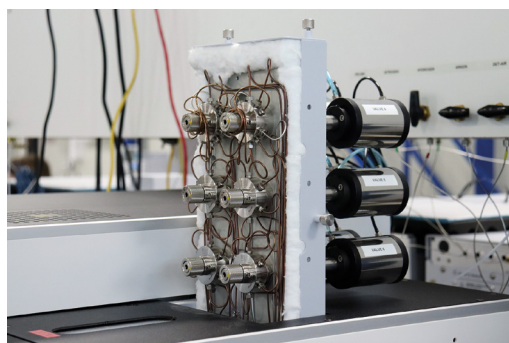
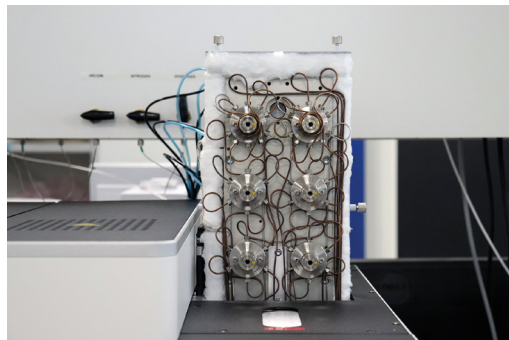


## Custom Solutions: Configured for your Application



### Capabilities that make a difference

- GC systems that are configured and tested for specific customer requirements
- Delivered with custom modification
- Complete performance test
- Multi Valve Oven for extra heated zones
- Unique Sample Pre-concentration Trap (SPT)
- Pulsed Flame Photometric Detector delivering part per trillion performance



## High Performance Liquid Chromatography



### SCION LC6000

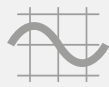
- Extra-large solvent cabinet
- Quaternary pump
- Autosampler
- Manual Injector
- Column oven with heating and cooling
- Full portfolio of detectors (DAD, UV, RI, FL)



### Solution Features

- Superior retention time stability
- Excellent flow rate precision
- Ultra-low carry over
- IQ/OQ





## Mass Spectrometry



### Model 8700 SQ GC-MS

- Lens free analyser ion path
- Off Axis ion source and detector increase sensitivity
- Active focusing Q0 pre-filter
- Full automation capabilities



### Specifications & Features

- Available with EI or CI ion source
- Mass range (m/z) 1 to 1200Da
- Scan rate up to 20,000 Da/s
- Mass resolution of 0.7-4Da with mass stability of 0.1Da over 48h
- High-performance turbo pump for rapid time to vacuum
- Dual filament source increases uptime
- Extended dynamic range (EDR) > 105 range
- Easy access maintenance and cleaning



### Model 8900 TQ GC-MS

- Innovative Lens free analyser ion path
- Off Axis ion source and detector increase sensitivity
- Active focusing Q0 pre-filter
- Full automation capabilities



### Specifications & Features

- Available with EI or CI ion source
- Mass range (m/z) 1 to 1200Da
- Scan rate up to 30,000 Da/s
- Mass resolution of 0.7-4Da with mass stability of 0.1Da over 48h
- MRM speed (1000 MRM/s)
- High-performance turbo pump for rapid time to vacuum
- Dual filament source increases uptime
- Six orders of magnitude dynamic range (EDR)
- Easy access maintenance and cleaning





## Both variants offer...

- Dual injector access
- Dual or duplicate injection capability
- Three solvent wash
- Sample tray heating or cooling
- Large solvent vial, Flowcell, SPME options



## Sampling



### 8400 PRO Autosampler

- Capacity = 100 x 2mL vials
- Wide variety of syringes
- Dual injection access



### 8410 PRO Autosampler

- Capacity = 10 x 2 mL + 6 x 5mL + 5 x 10mL vials
- Flow-through cell for continuous sampling
- Maximum flexibility in vial size



## Compass CDS



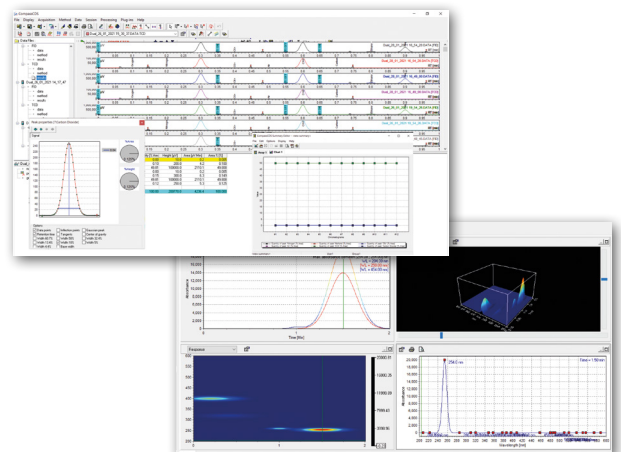
### Industry Proven

CompassCDS is an industry-proven, powerful and operator friendly networked chromatography data system software solution developed throughout the last 20 years according to requirements of our customer base. With its intuitive, easy-to-use and application and information-rich user interface and its unique capacity for customization, CompassCDS provides operators with a powerful tool for a variety of operations in different analytical fields. Multi-language support.

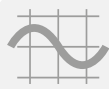


### Simply Powerful!

- Application-rich, configurable and intuitive UI
- Multi-vendor GC & LC instrument control
- Application specific tools - *1-Button interface, Validat, ChromSync, Hydrocarbon Reporting Tool, Sample Streamer, Eclipse DHA/SIMDIS*
- Unreached integration engine performance and precision
- Comprehensive calibration, calculation and reporting tools
- Centralised system administration and data management
- Robust design for 24/7 operations
- Scalable; from workstation to enterprise-wide C/S installations
- Complies to 21CFR11, ISO EN 17025
- Multi-language support







## Static Headspace



### Versa Automated Headspace Vial Sampler

- Small on size but big on value. Only 12" wide
- 20-position autosampler/single position platen oven
- 22mL vials
- Sample heating to 200°C throughout pathway
- Built-in pressure control to ensure consistent volume for all samples regardless of external conditions
- Inert sample pathway including transfer line, sample needle, and loop provides superior analytical results by eliminating adsorption and reducing carryover
- Automatic leak check and Benchmark test for quick troubleshooting
- Simple method development using Method Optimization Mode (M.O.M.)
- Versa TekLink™ 2G software for use as standard or full 21 CFR compliance



### HT3 Static and Dynamic Headspace System

- Standard integrated 60-position autosampler with 10-position platen heater provides true walk away automation
- Increased sensitivity from 50 to 100 times with the Dynamic Headspace option (compound dependent)
- Removable sample path for trouble-free maintenance
- High temperature capability to 300°C expands range of applications
- Inert sample pathway including transfer line, sample needle and loop provides superior analytical results by eliminating adsorption and reducing carryover
- Automated Leak Check and Benchmark for quick troubleshooting
- Automated method development using Method Optimization Mode (M.O.M.)
- 21 CFR Compliance
- Built-in Mass Flow Controller ensures consistent flow and pressure for all samples regardless of external conditions





## Parts and Consumables

Download our Parts & Consumable Brochure using the QR Code

Try our Columns, Filters, Ferrules, Septa, Liners, Vials etc.



### SCION Instruments Contact Details:

[Contact Us](#) | [SCION Instruments](#) | [Gas Chromatography Solutions](#)

### Find your SCION Instruments Distributor in your Region or Country:

[Distributors](#) | [SCION Instruments](#) | [Gas Chromatography Solutions](#)

### Parts and Consumables

[Parts & Consumables](#) | [SCION Instruments](#) | [Gas Chromatography Solutions](#)

#### SCION Instruments UK Ltd.

4 Michaelson Square  
Livingston,  
EH54 7DP, Scotland,  
United Kingdom

[scioninstruments.com](http://scioninstruments.com)  
Tel: +44 (0) 1506 300200  
Email: [sales-eu@scioninstruments.com](mailto:sales-eu@scioninstruments.com)

#### SCION Instruments NL BV

HQ, Amundsenweg 22-24,  
4462 GP Goes,  
The Netherlands

[scioninstruments.com](http://scioninstruments.com)  
Tel: +31 (0) 113 287 600  
Email: [sales-eu@scioninstruments.com](mailto:sales-eu@scioninstruments.com)

#### SCION Instruments USA

11840 West Market Place  
Suite K and L,  
Fulton, MD 20759  
North America

[scioninstruments.com](http://scioninstruments.com)  
Tel: +1-844-547-0022  
Email: [sales-USA@scioninstruments.com](mailto:sales-USA@scioninstruments.com)