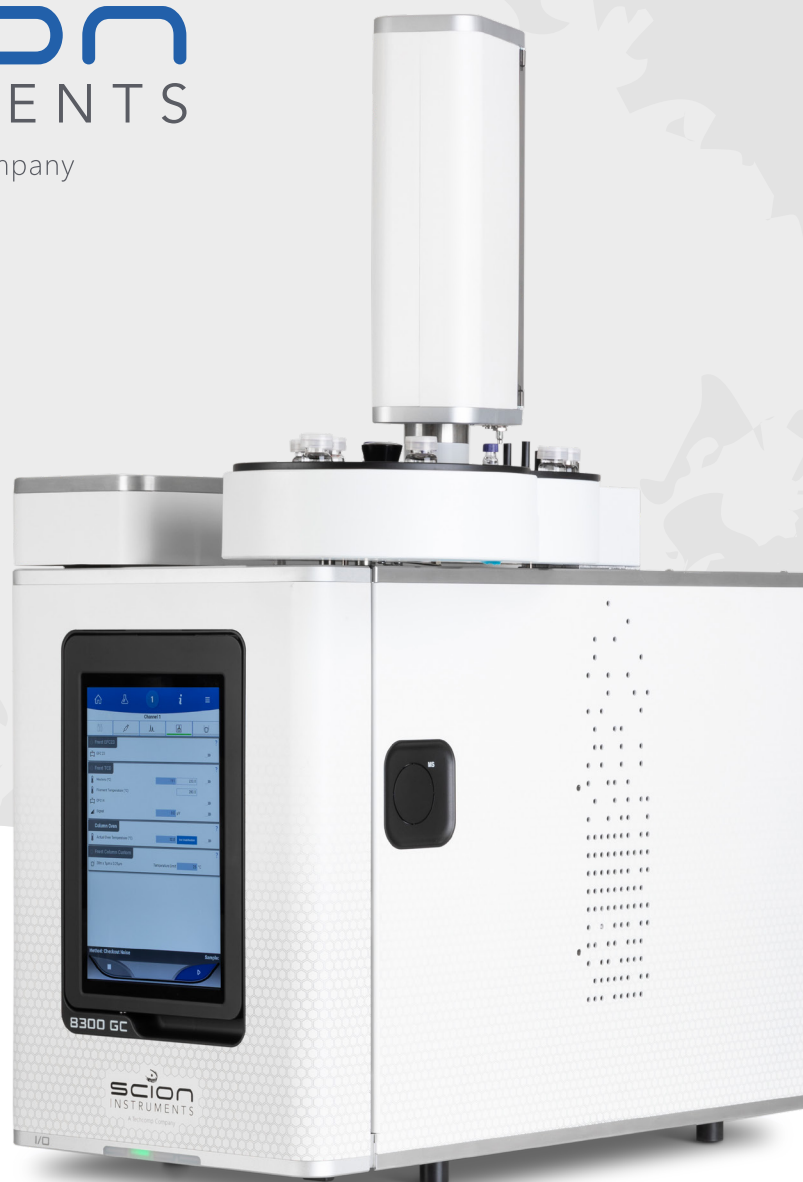




scion
INSTRUMENTS


A Techcomp Company



GC 8300

GAS CHROMATOGRAPH

Specification Sheet

 +44 (0)1506 300 200

 sales-eu@scioninstruments.com

 scioninstruments.com

DIMENSIONS AND WEIGHTS

Size*: Height: 57 cm (22.4 in.)
 Width: 32 cm (12.6 in.)
 Depth: 61 cm (24.0 in.)
 Weight*: 26.8 kg (59 lb)

*Typical values

ENVIRONMENTAL CONDITIONS

Operating temperatures: 10 °C to 40 °C.
 Operating humidity (relative): 5 % to 95 %
 Line voltage requirements: 120 V, 230 V (±10 % nominal)

COLUMN OVEN

Dimensions: 23 cm (w) x 11 cm (d) x 28 cm (h)

Temperature range:

- Ambient +10 °C to 450 °C
- Liquid N₂: -100 °C to 450 °C
- Liquid CO₂: -60 °C to 450 °C

Temperature program ramps/holds: 24/25
 Maximum temperature ramp rate: 170°C/min for all voltages

Cool down rate: 400 °C to 50 °C in 4.5 minutes
 Temperature set-point resolution: 0.1°C
 Ambient temperature reject <0.01°C change in oven for 1°C change in ambient temp
 Retention Time Repeatability <0.008% or < 0.0008 min, based on Pentadecane under temperature program conditions
 Area repeatability < 1% RSD

GENERAL SPECIFICATIONS

Up to 3 EFC modules total, injector, detector and auxiliary
 Optional backflush

GC Control:

- External events (digital output):
 - 8 standard
 - 8 optional, total 16
- Max number of timed events: 25
- Heated zones:
 - Standard 5
- Two power outlets 24V (1A max. each)

Temperature Range (°C)	GC 8300 Rates (°C/min)
50 - 70	170
70 - 115	105
115 - 175	80
175 - 300	55
300 - 450	35

METHODS

- Maximum stored internal methods: 50 (max. 30 alphanumeric characters)

Logging:

- Run log file (stored with the chromatogram when using CompassCDS)
- Error log file

Local Display:

- 10" High-resolution full-colour touchscreen
- Angle of the touchscreen on the GC can be adjusted to 3 different positions for adjusted view.

Languages:

- EnglishGB, EnglishUS, German, French, Italian, Dutch, Polish, Russian, Spanish, Portuguese, ChineseSC, ChineseTC, Korean, Thai, Vietnamese, Japanese.

Local automation:

- Method lines: 25
- Modes:
 - Infinite looping
 - Dual and duplicate injection

COMMUNICATION

Ethernet: Protocol: TCP/IP

Data rate: 100 Mbps

Control: GC control and method parameters

Analog output (optional):

- Number of channels: 1
- Time programmable steps: 30
- Output software selectable (set individual):
 - 0-1 V (default)
 - 0-10 V

Synchronisation signals with other devices & data systems:

- Ready in and out
- Start in and out

Data Handling and System Control:

- CompassCDS Chromatography Data System

CERTIFICATIONS

- CE
- UKCA
- TÜV SÜD NRTL Mark (US/Canada)
- FCC Part 15 Subpart B
- CAN ICES-003(A) / NMB-003(A)

INJECTOR OPTIONS

Maximum injectors: two, operating concurrently
 Pneumatics: Electronic Flow Control (EFC), or manual

Injector types:

- S/SL Split/Splitless injector*
- PTV Programmable Temperature Vaporising*
- COC Cold On-Column injector*
- Flash injector
- PWOC Packed/ Wide bore On-Column injector

*Including septum purge

S/SL SPLIT/SPLITLESS INJECTOR

Pressure range: 0-150 psi

Total flow:

- 500 mL/min for N₂/Ar
- 1500 mL/min for He/H₂

Maximum temperature: 450 °C

Split range: 1-10,000 (column dependent)

Suited for columns:

Wide bore: (0.53 mm)

Narrow bore: (0.05 to 0.32 mm)

COC COLD ON-COLUMN INJECTOR

Pressure range: 0-150 psi

Total Flow: 50 mL/min (Type 23 EFC)

Temperature range:

- Ambient + 10 °C to 450 °C using air cooling
- -60 °C to 450 °C using liquid CO₂ cooling
- -160 °C to 450 °C using liquid N₂ cooling

Maximum temperature: 450 °C

Maximum temperature ramp rate: 200 °C/min

Temperature ramps/holds: 24/25

Suited for columns:

- Wide bore (0.53 mm)
- Narrow bore (0.32 mm)

PTV PROGRAMMABLE TEMPERATURE

Vaporising Injector

Pressure range: 0-150 psi

Total flow:

- 500 mL/min for N₂/Ar
- 1500 ml/min for He/H₂

TEMPERATURE RANGE

- Ambient + 10 °C to 450 °C using air cooling
- -160 °C to 450 °C using liquid N₂ cooling
- -60 °C to 450 °C using liquid CO₂ cooling

Maximum temperature ramp rate: 200 °C/min

Temperature ramps/holds: 24/25

Split range: 1-10,000 (column dependent)

Operational capabilities:

- Large volume injection
- Temperature ramped splitless
- Cold on-column
- Split and splitless
- ChromatoProbe solid sample introduction optional

Suited for columns:

- Wide bore (0.53 mm)
- Narrow bore (0.05 to 0.32 mm)

Maximum injection volume: 250 µL (LVI mode)

FLASH INJECTOR

Pressure range: 0-150 psi

Total flow:

- 50 mL/min (Type 23 EFC)

Maximum temperature: 450 °C

Suited for columns:

- Wide bore (0.53 mm)
- Packed (1/8" to 1/4")

PWOC PACKED/WIDE-BORE ON-COLUMN

Pressure range: 0-150 psi

Total flow:

- 50 mL/min (Type 23 EFC)

Maximum temperature: 450 °C

Suited for columns:

- Wide bore (0.53 mm)
- Packed (1/8" to 1/4")

ELECTRONIC FLOW CONTROL: INJECTORS (EFC)

Module types: 2 injector-specific modules

Pressure: 0.1 % Full Scale

Resolution pressure set points is 0.001psi

Flow sensor accuracy 2% of measured or 0.2% of full scale

Flow sensor repeatability 0.5%

SAMPLE PRECONCENTRATION TRAP (SPT)

Trace level analysis of volatiles in gases

Fully integrated

Temperature range:

- -60 °C to 450 °C using liquid CO₂ cooling
- -185 °C to 450 °C using liquid N₂ cooling

Temperature rate:

- Ballistic heating for instant release of adsorbed volatiles.
Typical heating rate 50°/sec.

Available traps:

- Two lengths - 8 and 30 cm
- A wide range of packing materials, including glass beads, Tenax and other specific adsorbents. Packing material may be customized

QUICK-SWITCH VALVE OPTION

Instantly switch between injectors/columns and detectors

Configurations: automated or manual, factory or field installed

DETECTOR OPTIONS

Maximum detectors: Two, operating concurrently (one of which is MS or external Detector)

Pneumatics: Electronic Flow Control (DEFC) or manual

Detector types:

- FID Flame Ionization Detector
- TCD Thermal Conductivity Detector
- ECD Electron Capture Detector
- NPD (TSD) Nitrogen-Phosphorus Detector
- PFPD Pulsed Flame Photometric Detector
- PDHID Pulsed Discharge Helium Ionization Detector
- MS Mass Spectrometry (see GC/MS brochure and datasheet)

Note: Data Acquisition Rate : 600Hz for all detectors, exception is the PFPD

FID FLAME IONISATION DETECTOR

Maximum temperature: 450 °C

Detectivity: 1.2 pg C/sec

Linear dynamic range: 10^7

FLAME TIP TYPE: CERAMIC (PATENTED)

Operational quality:

- Flame-out detection
- Auto re-ignition

TCD THERMAL CONDUCTIVITY DETECTOR

Maximum temperature: 450 °C

Detectivity: 300 pg/mL (Butane)

Linear dynamic range: 10^6

Operational quality:

- Filament protection
- Automatic bridge balancing

ECD ELECTRON CAPTURE DETECTOR

Maximum temperature: 450 °C

Detectivity: 7 fg/s Lindane

Linear dynamic range: 10^4

Radioactive source: ^{63}Ni - 15 mCi (555 Mbq)

NPD (TSD) NITROGEN-PHOSPHORUS DETECTOR

Maximum temperature: 450 °C

Detectivity:

N: 100 fg N/sec (Azobenzene)

P: 100 fg P/sec (Malathion)

Linear dynamic range:

- N: 10^5
- P: 10^4

Operational quality: self-aligning bead

PFPD PULSED FLAME PHOTOMETRIC DETECTOR

Photomultiplier tube:

- S/P
- S/P/N

Maximum temperature: 450 °C

Detectivity:

- S: 1 pg S/sec (S/P tube)
- P: 100 fg P/sec (S/P tube)
- N: 20 pg N/sec (S/P/N tube)

Linear dynamic range:

S: 10^3

P: 10^4

N: 10^2

Up to 23 elements can be detected

PDHID Pulsed Discharge Helium Ionization Detector

Detectivity: 50 ppb (Methane)

Linear dynamic range: 10^4 (Methane)

Operational quality:

- Gold plated connections
- Welded column connections

DETECTORS (DEFC)

Module types: 6 detector-specific modules

Accuracy: $\pm 7\%$ set point flow

Resolution: 0.1 or 1 mL/min

Automation Options

8410 PRO AUTO INJECTOR

Sample capacity:

- 10 x 2 mL vials
 - 6 x 5 mL vials
 - 5 x 10 mL vials
- Large solvent wash vial: 2 x 120 mL*
- Dual and duplicate mode
- Internal standard addition

Modes of operation:

- Liquid
- Ambient headspace*
- SPME (Solid Phase MicroExtraction)*
- Sample heating and cooling*

Pre-programmed modes of injection Syringes:

- 1 μ L, 2 μ L, 5 μ L, 10 μ L, 100 μ L, 250 μ L
- for liquid injection
- SPME

8400 PRO AUTOSAMPLER

Sample capacity: 100 x 2 mL vials
 Large solvent wash vial: 2 x 120 mL*
 Dual and duplicate mode
 Internal standard addition

Modes of operation:

- Liquid
- Ambient headspace*
- SPME*
- Sample heating and cooling*
- Pre-programmed modes of injection

SYRINGES:

- 1 μ L, 2 μ L, 5 μ L, 10 μ L, 100 μ L, 250 μ L for liquid injection
 - SPME
- * Optional

PAL3 XYZ AUTOSAMPLER – LSI, RSI, RTC VERSIONS

Sample trays: two standard and expandable to four Tray types:

- 98 x 2 mL vials
- 200 x 1 mL vials
- 32 x 10 mL/20 mL vials
- 96-well plates

Dual and duplicate mode
 Internal standard addition

Modes of operation:

- Liquid
- Heated headspace*
- SPME*
- ITEX*

Sample heating and cooling

Additional optional modules: further sample trays, microwell plate holders, wash station, SPME fiber bake-out station, dilutor, barcode readers, and flowcell

* Optional



scioninstruments.com
Tel: +44 (0)1506 300200
Email: sales-eu@scioninstruments.com

SCION Instruments
HQ, Livingston Business Centre,
Kirkton South Road, West Lothian,
EH54 7FA, Livingston, United Kingdom

SCION Instruments NL BV
Amundsenweg 22-24,
4462 GP Goes,
Netherlands