



SAMPLE STREAMER

SOFTWARE PACKAGE

Sample Streamer is a multi-instrument software package that provides a fully automated link between sample information and results for the routine laboratory.



Sample Streamer

SAMPLE STREAMER IS A MULTI-INSTRUMENT SOFTWARE PACKAGE THAT PROVIDES A FULLY AUTOMATED LINK BETWEEN SAMPLE INFORMATION AND RESULTS FOR THE ROUTINE LABORATORY.

It provides the tracking and confidence you need, from samples arriving at the lab to results returned and reported. It can program samples across instruments to improve instrument utilisation, and efficiency.

Benefits

Save time and eliminate errors

Automated information transfer from LIMS to Sample Streamer avoids repeated manual input and prevents errors.

Schedule analyses for any sample on any instrument

Necessary information stays with the sample.

Single screen control

Monitor the schedule for samples on every instrument on one screen.

Optimise productivity

Choose backup instruments or rearrange priorities to manage workload.

Supervise lab activities

Sort, group, and/or filter information to customise the display.

Automation Eliminates Incorrect Entries

Sample test information (analytical method, instrument, special calculations, if any), is entered into a LIMS (laboratory information management system) and automatically transferred to Sample Streamer through a standardised XML file to be scheduled on the appropriate instrument. A sample is loaded into the autosampler and the process begins. Compass transfers completed test results back to the LIMS system. The sample is always analysed and reported correctly because all of the test information is in the LIMS system. There is no possibility for incorrect entries.

Works with or without LIMS

Sample Streamer integrates with most LIMS systems. Labs without a LIMS can still benefit from Sample Streamer's multi-instrument sequencing capabilities. Sample information can be directly entered into Sample Streamer, as shown in Figure 1. If your LIMS does not have all of the necessary information, Scion can create a separate custom database to automatically provide the remaining information for sample analysis.

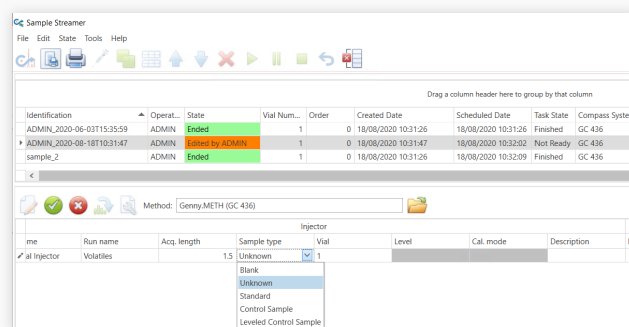


Figure 1 Manually modifying sample information

Manage Priorities, Maximise Productivity

Manage priorities for all of your samples from a single screen. With one click, you can change the priorities of samples using the Sooner or Later arrow buttons (Figure 2).

Urgent samples can be run ahead of others without interrupting scheduled operations.



Figure 2 Easily prioritise samples

Samples requiring several tests on different instruments can be scheduled in a single operation. The information appropriate to each test is automatically transferred to the correct instrument.

If an instrument is unavailable for analysis you can move samples to a pre-determined backup instrument to optimise workloads. All the necessary information goes with the sample.

Comprehensive Views

Sample Streamer makes viewing the activities of a large multi-instrument lab easy. Organise sample or instrument information any way you want. Group the display by instrument, sample, status (running, scheduled, ended, etc.) or any other information column (Figure 3).

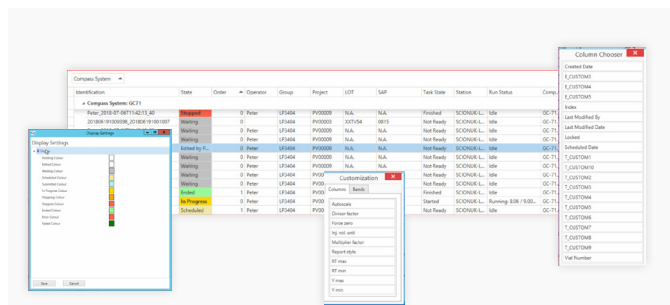


Figure 3 Can select columns for grouping by drag and drop. Colour code analysis, waiting completed etc.

Sort samples in any order or filter samples to only display selected information. For example, view only the analyses currently running or those that are complete. Colour code the status you want to see.

Automated Results

A single click will open one or more data files directly in Compass for reviewing results or reprocessing the data (Figure 4).

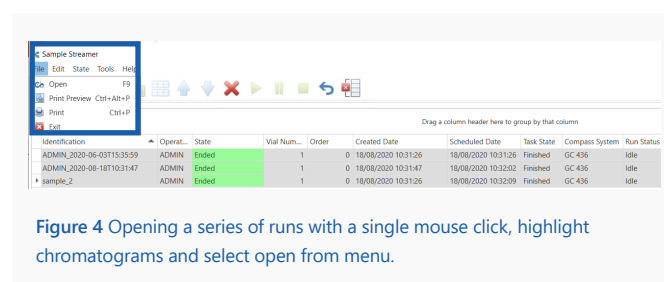
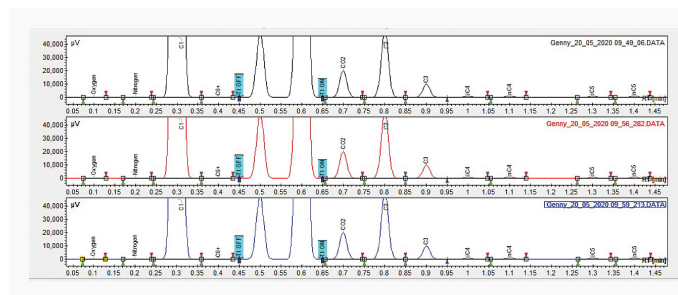


Figure 4 Opening a series of runs with a single mouse click, highlight chromatograms and select open from menu.

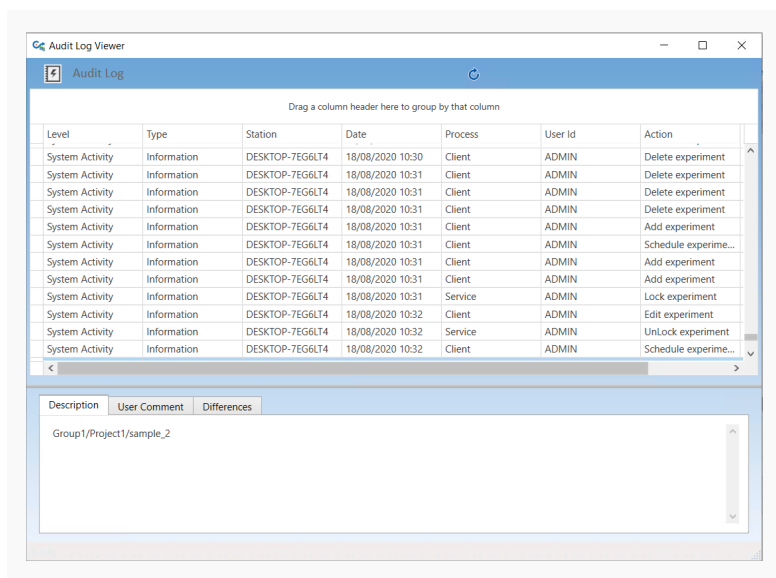
Results are calculated automatically in Compass, generating a file that can be read by the LIMS system. The content and format of this file is fully configurable, and it can be exported to a directory which the LIMS automatically scans for results. You won't have to manually enter sample results into the LIMS. Results can be used immediately to manage your process to its optimum performance.

Sample Streamer puts you one step closer to complete automation of your routine chromatography analysis process. It is compatible with any GC or HPLC instrument supported by the Compass Chromatography Data System and virtually any LIMS available.



Compliance

Sample streamer can be fully 21CFR11 compliant for controlled environments. With a built in audit log viewer, all actions can be recorded and reviewed.



Customisable

If there are special requirements from samples, LIMS or reporting we have a team of specialists ready to assist you. If you need help with setup and configuration of sample streamer right the way through to specialist software for your laboratory.

Summary

- Sample streamer allows complete automation
- Automatically stream samples for analysis
- Improved utilisation of instruments
- Less sample administration, LIMS can define all parameters for a sample
- Prioritise samples dependant on urgency
- No need for CompassCDS or SS to be open. Completely background automated.
- Manual override if needed

SCION Instruments UK Ltd.

4 Michaelson Square
Livingston,
EH54 7DP, Scotland,
United Kingdom

scioninstruments.com

Tel: +44 (0) 1506 300200

Email: sales-eu@scioninstruments.com

SCION Instruments NL BV

HQ. Amundsenweg 22-24,
4462 GP Goes,
The Netherlands

scioninstruments.com

Tel: +31 (0) 113 287 600

Email: sales-eu@scioninstruments.com

SCION Instruments USA

11840 West Market Place
Suite K and L,
Fulton, MD 20759
North America

scioninstruments.com

Tel: +1-844-547-0022

Email: sales-USA@scioninstruments.com