

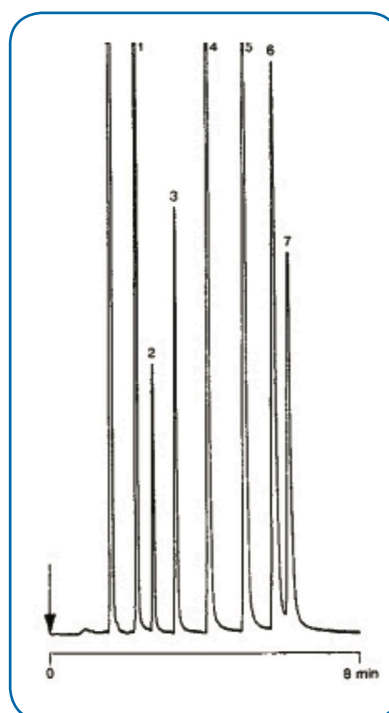
Application Note

Environmental

Glycols Determination of glycerine

Gas chromatography with a SCION-PLOT Q column separates seven glycols and glycerols in eight minutes.

Conditions	
Technique	GC-wide-bore
Column	SCION-PLOT Q, 0.53 mm x 25 m, df = 20 µm (Part no. SC35102)
Temperature	240 °C
Carrier Gas	H ₂ , 30 kPa
Injector	Splitter T = 220 °C
Detector	FID T = 250 °C
Sample Size	1 microliter
Concentration Range	1%
Sample Solvent	water/methanol



Peak Identification

1	ethylene glycol
2	1,2-propylene glycol
3	1,3-propylene glycol
4	1,3-butylene glycol
5	1,4-butylene glycol
6	glycerol (glycerine)
7	diethylene glycol